

COVID-19 Data and metrics

Kimberly Repp, PhD, MPH
Chief Epidemiologist

Marni Kuyl, MS
Health & Human Services Director

7/21/2020

COVID-19 related deaths – Federal definitions

For community: death of a confirmed or probable COVID-19 case within 60 days of the earliest available date among exposure to a confirmed case, onset of symptoms, or date of specimen collection for the first positive test; OR someone with a COVID-19- specific ICD-10 code listed as a primary or contributing cause of death on a death certificate

For hospitalized: death from *any* cause in a hospitalized person during admission or in the 60 days following discharge AND a COVID-19 positive laboratory diagnostic test at any time since 14 days prior to hospitalization

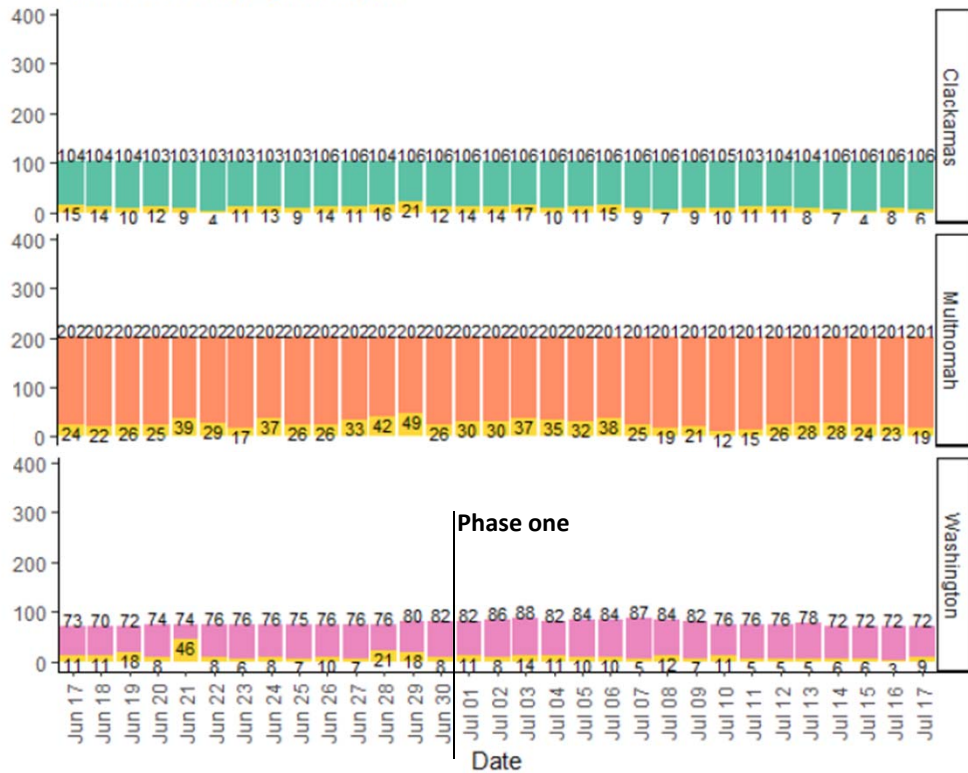
COVID-19 related deaths – our definition

For community: death of a confirmed or probable COVID-19 case within 60 days of the earliest available date among exposure to a confirmed case, onset of symptoms, or date of specimen collection for the first positive test; OR someone with a COVID-19- specific ICD-10 code listed as a primary or contributing cause of death on a death certificate (n=21)

For hospitalized: death from any cause in a hospitalized person during admission or in the 60 days following discharge AND a COVID-19 positive laboratory diagnostic test at any time since 14 days prior to hospitalization

Staffed (total) adult ICU beds by county, Portland Metro Area

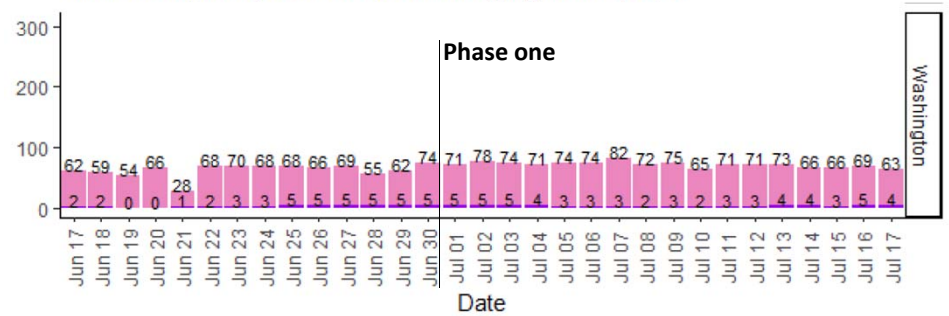
Available beds highlighted in gold



Region Clackamas Multnomah Rest of state Washington

Occupied adult ICU beds by county, Portland Metro Area

Beds occupied by COVID + patients highlighted in purple



Take home:

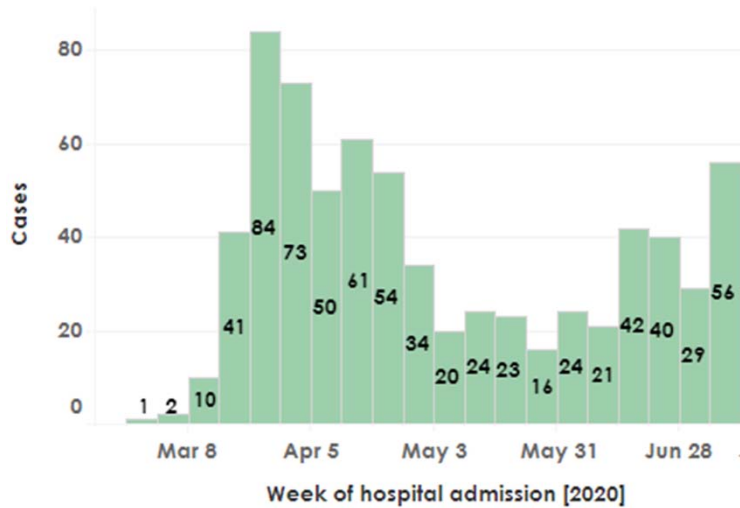
~50 ICU beds open in Portland Metro

<10 ICU beds open in Washington County

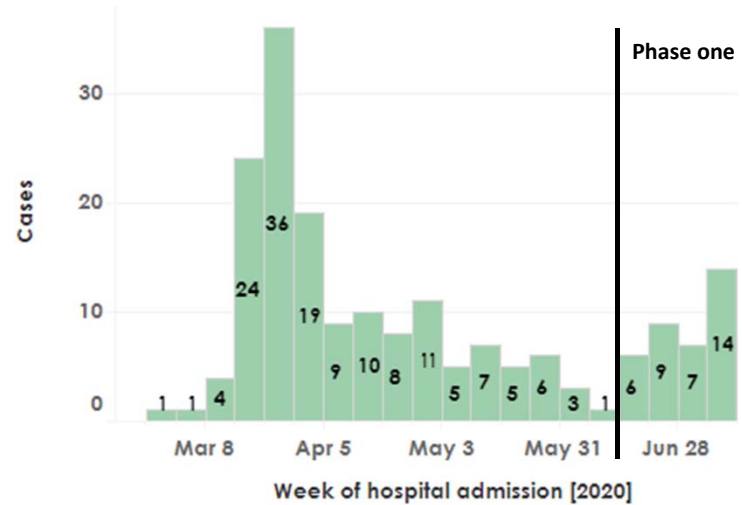
~6% of our ICU beds are COVID-19 patients

COVID-19 Hospital admissions

Regional



Washington County



Washington County metrics over time

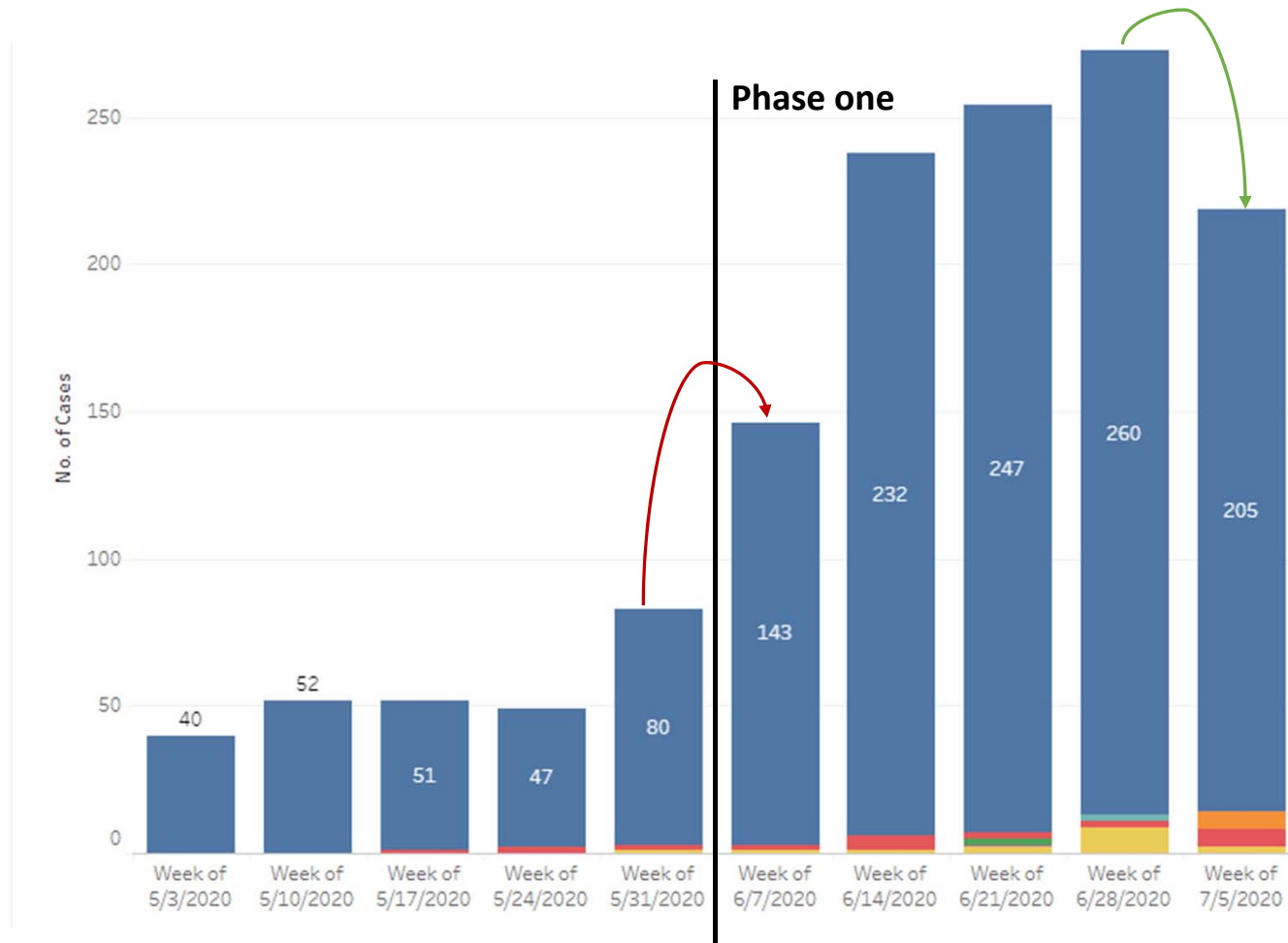
	Trend in percent of tests that result positive in last 7 days (should not trend up)	Percent increase in new cases in last 7 days (should be no more than 5%)	Percent of cases not traced to a known source in last 7 days (should be below 30%)	Trend in COVID-19 hospitalizations over the last 14 days (should downtrend)	Percent of cases in last 7 days with follow up initiated within 24 hours (should be 95% or more)
May 4 - May 11	No Uptrend	22%	71%	Downtrend	100%
May 11 - May 17	Downtrend	0%	40%	Uptrend	100%
May 18 - May 24	No Trend	2%	36%	Downtrend	98%
May 25 - May 31	Downtrend	-11%	36%	Uptrend	100%
<hr/>					
June 1 - June 7	Uptrend	14%	25%	Downtrend	100%
June 8 - June 14	Uptrend	28%	65%	Downtrend	100%
June 15 - June 21	No Trend	136%	34%	Uptrend	100%
June 22 - June 28	Downtrend	23%	34%	Slight uptrend	99%
June 29 - July 5	Uptrend	30%	43%	Downtrend	99%
July 5 - July 11	Downtrend	-11%	51%	Uptrend	99%

Entered Phase One

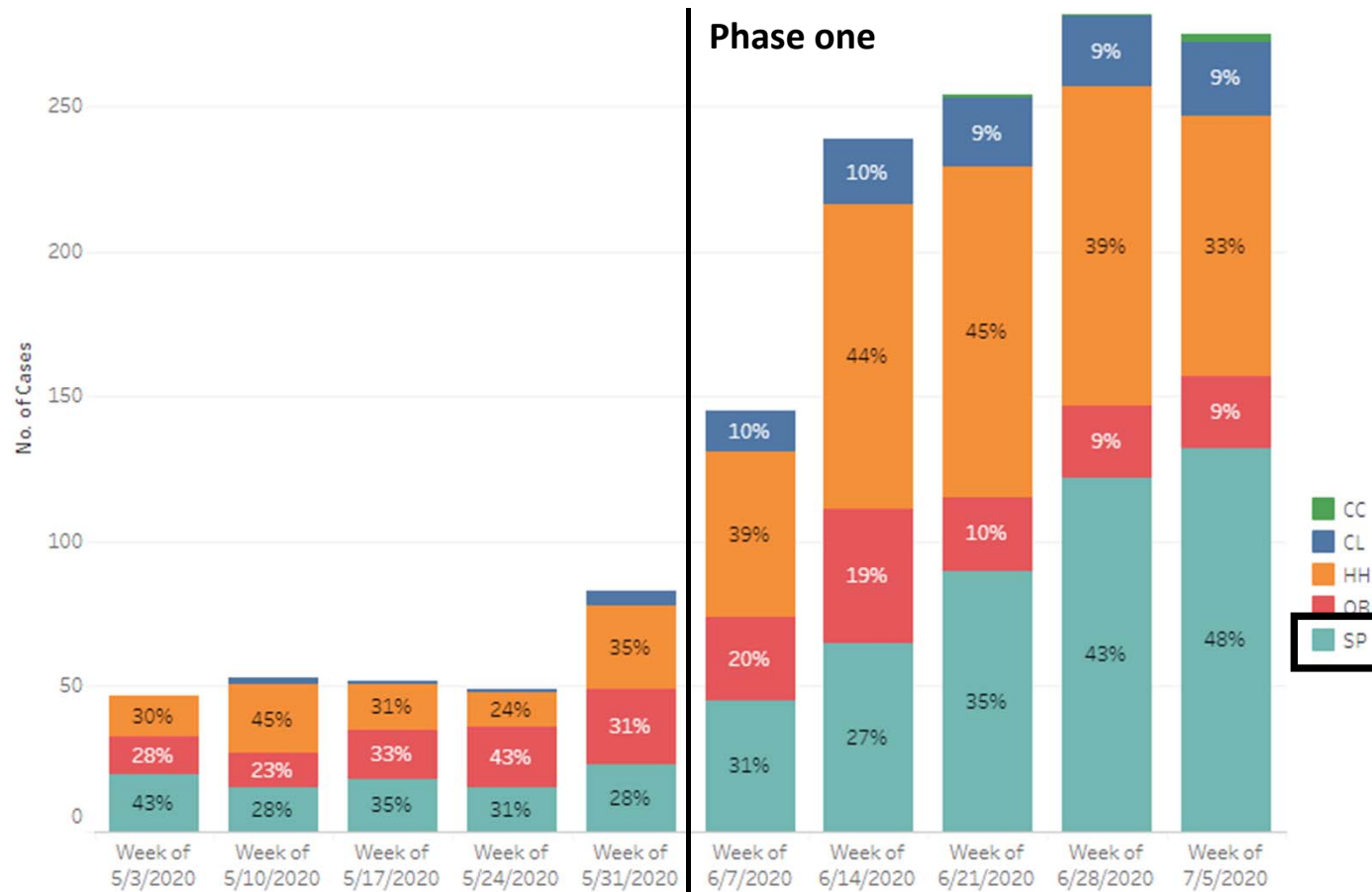
Percent positive COVID-19 tests



Percent case increase over time



Percent of sporadic cases



Data summary

Too early to see if governor's newest restrictions are effective

Demographic of cases are changing

Business outbreaks

Hospital capacity

Future depends on individual's choices

