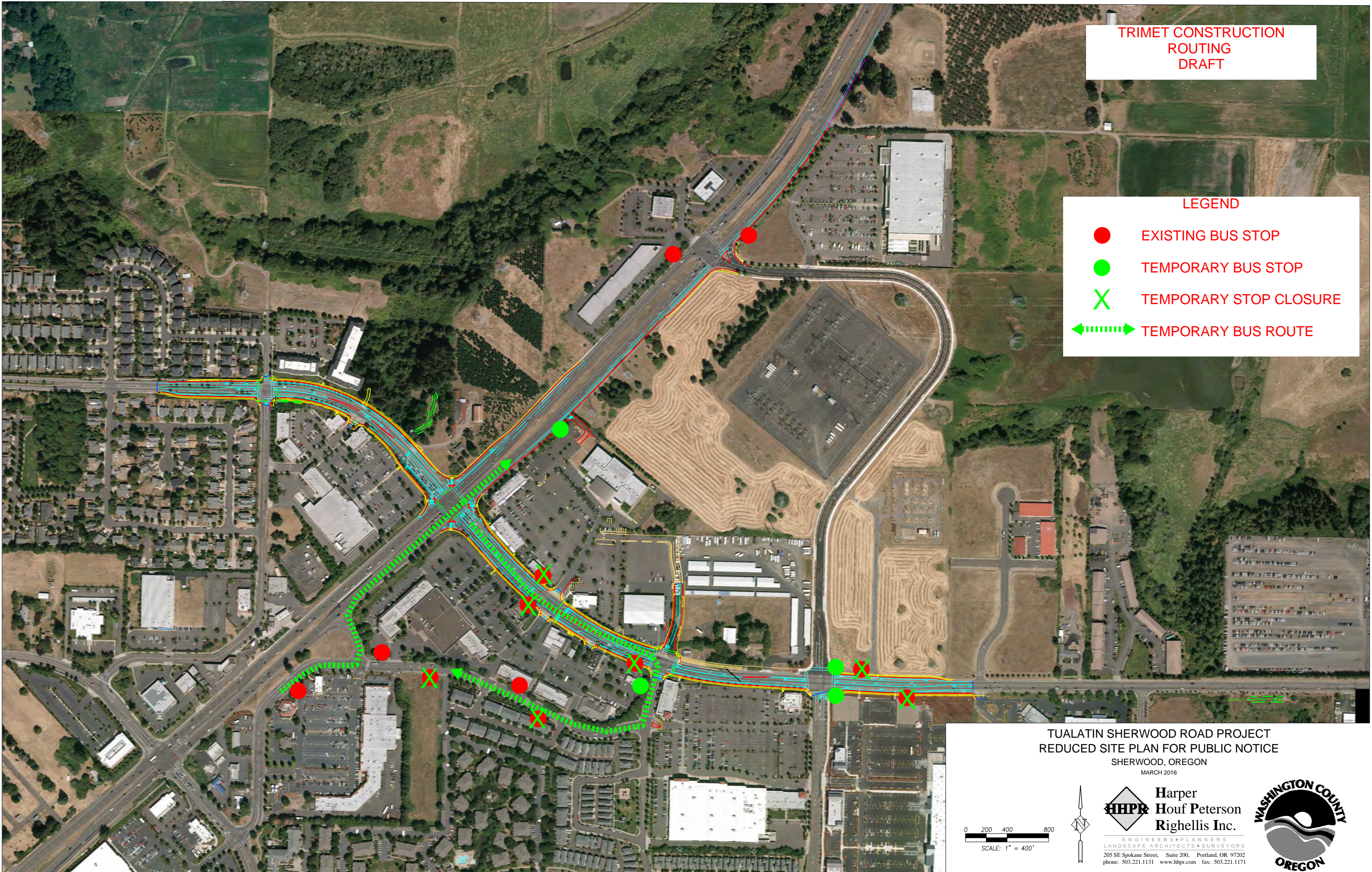


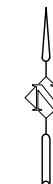
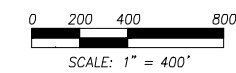
TRIMET CONSTRUCTION
ROUTING
DRAFT

LEGEND

- EXISTING BUS STOP
- TEMPORARY BUS STOP
- X TEMPORARY STOP CLOSURE
- ←-----→ TEMPORARY BUS ROUTE



TUALATIN SHERWOOD ROAD PROJECT
REDUCED SITE PLAN FOR PUBLIC NOTICE
SHERWOOD, OREGON
MARCH 2016



Harper
Houf Peterson
Righellis Inc.

ENGINEERS • PLANNERS
LANDSCAPE ARCHITECTS • SURVEYORS
205 SE Spokane Street, Suite 200, Portland, OR 97202
phone: 503.221.1131 www.hhpr.com fax: 503.221.1171

