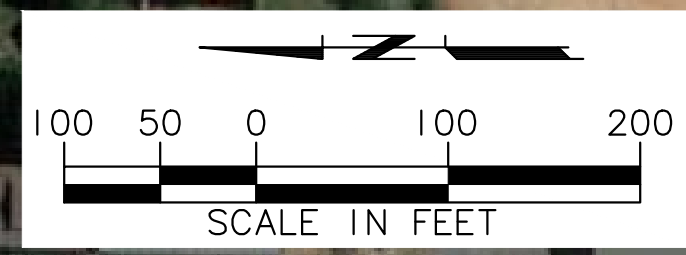
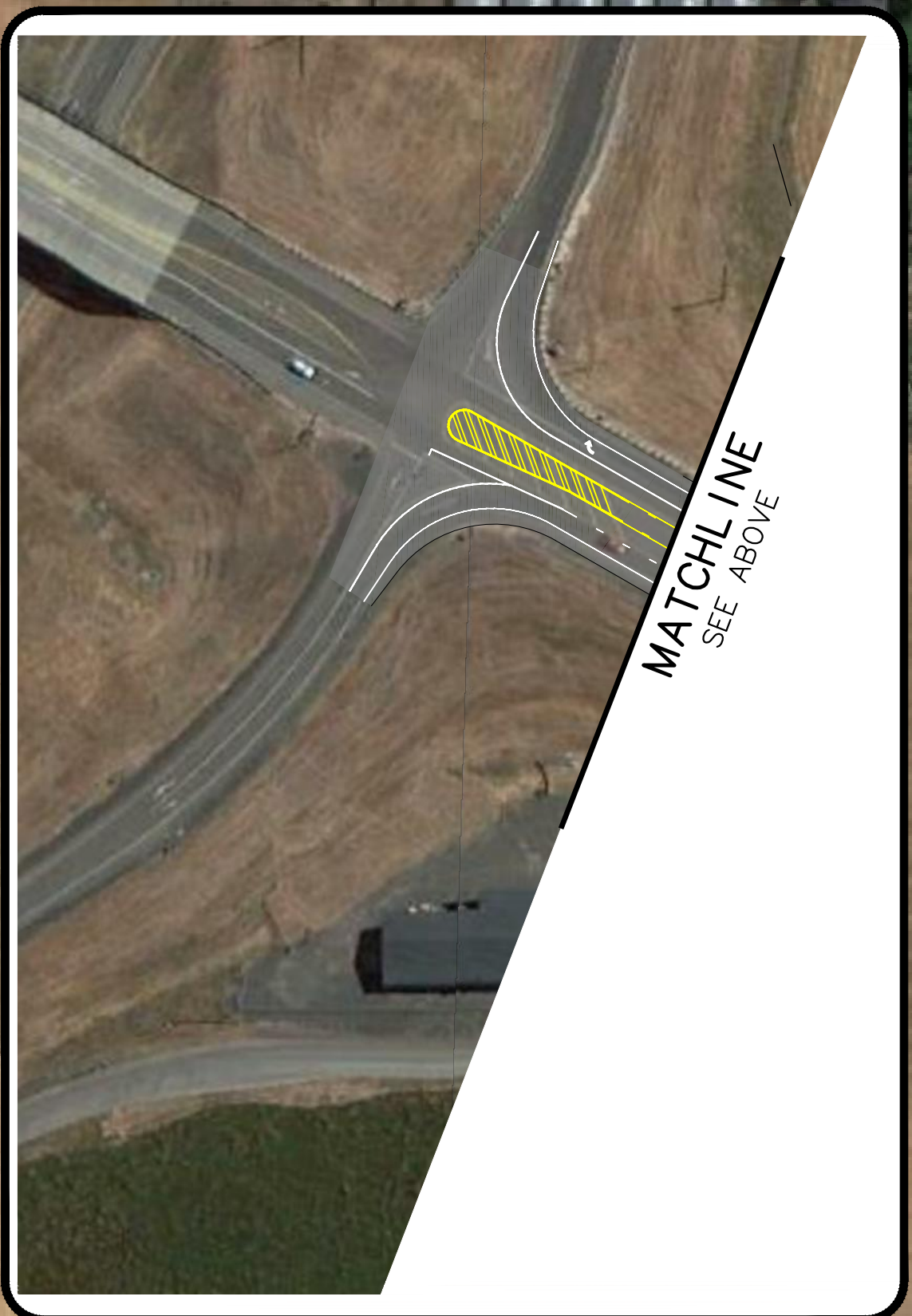




SEE BELOW  
MATCHLINE

NW JACKSON SCHOOL ROAD

NW MEEK ROAD

NW SCOTCH  
CHURCH ROAD




**WASHINGTON COUNTY**  
**WASHINGTON COUNTY**  
**NW Jackson School Road at NW Scotch Church and NW Meek Roads**  
 ALTERNATIVE 4: ROUNDABOUT  
 NOVEMBER 2013  

**MurraySmith & Associates, Inc.**  
**Engineers/Planners**  
121 S.W. Schann, Suite 900 PHONE 503-255-9600  
 Portland, Oregon 97204 FAX 503-255-9622  
 13-1418.0201