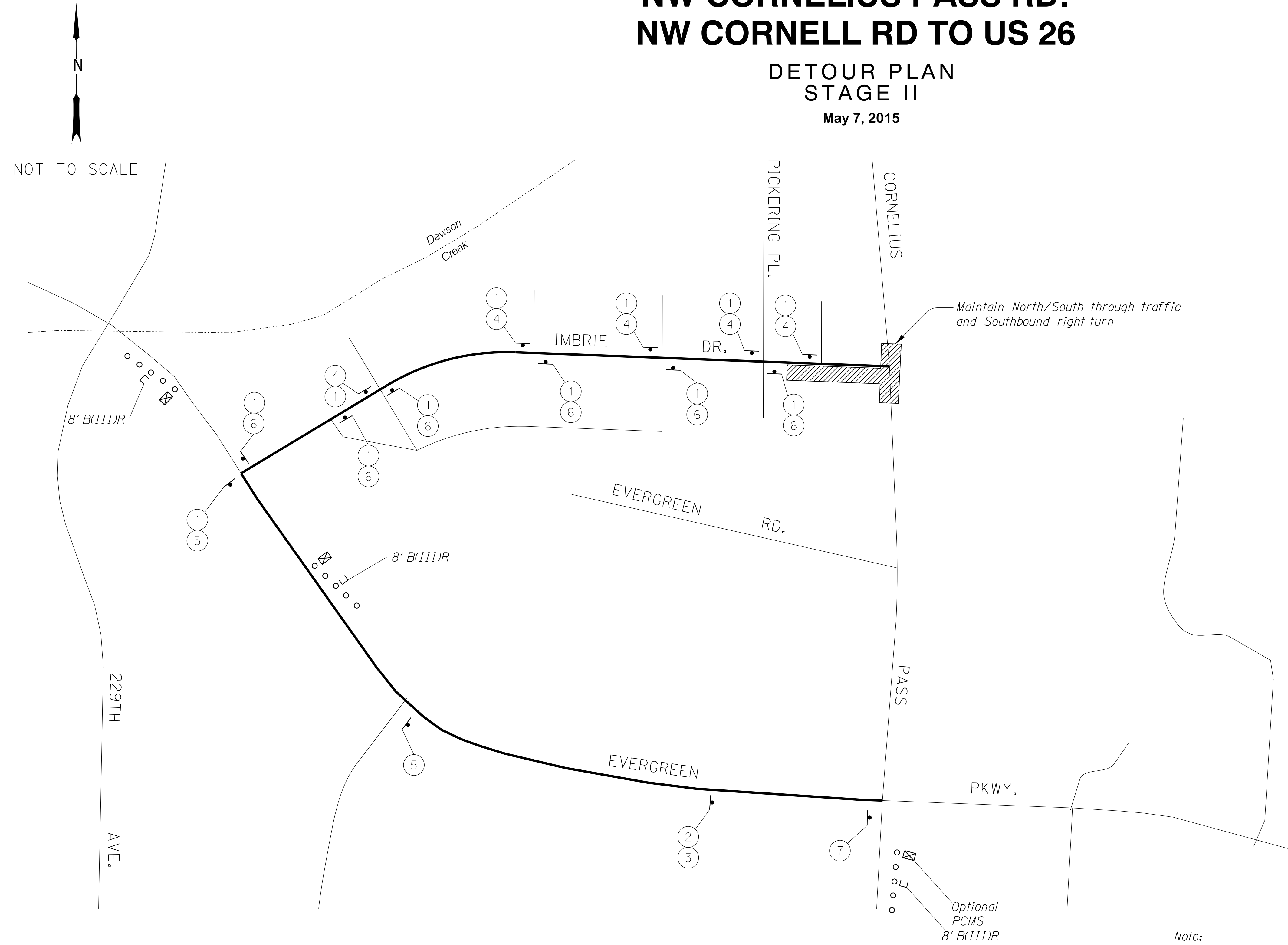


NW CORNELIUS PASS RD: NW CORNELL RD TO US 26

DETOUR PLAN STAGE II

May 7, 2015

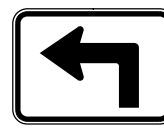


NOT TO SCALE

12" **CORNELIUS PASS RD** 66"

26 24X24 Type "W1"

②



21x15

③



30x24

④



30x24

⑤



30x24

⑥

**END
DETOUR**

30x24

⑦

PCMS

**IMBRIE RD
CLOSED AT
CORN PASS RD**

**DATE-
DATE**

Legend

- Detour route
- Closed section (Right in at intersection. Right/left in, right out at driveway.)
- PCMS
- Barricade
- Temporary plastic drums on 20' max. spacing

