



PROJECT UPDATE

Nov. 22, 2019

Elwert-Kruger Roads Intersection Project

Kruger Road closure expected to begin Dec. 4

Kruger Road, from the Elwert/Kruger roads intersection to the west end of the future Sherwood high school, is expected to close Dec. 4-Jan. 31 for construction of the [Elwert/Kruger roundabout project](#).

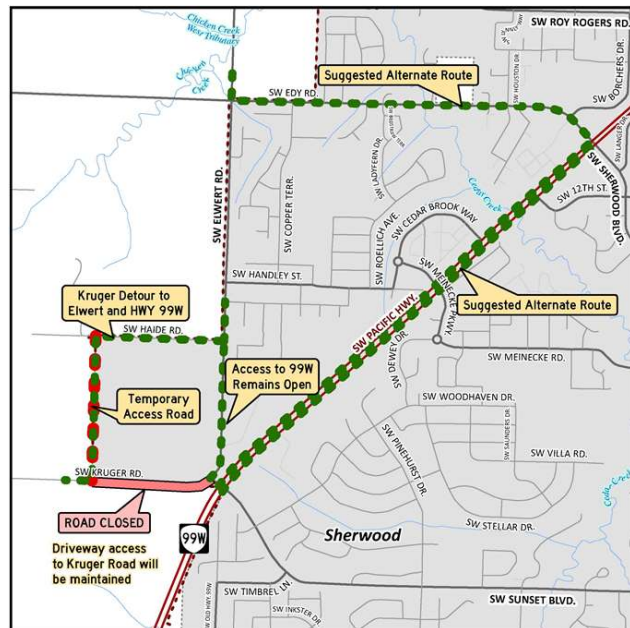
The expected detour will be between Kruger and Haide roads through the high school's temporary access road. Local driveways will be accessible; all through traffic must use the detour.

The Elwert-Kruger project includes:

- Two-lane roundabout northeast of the current intersection
- Realignment of portions of Kruger and Elwert roads
- Widening of Kruger Road
- Widening and additional lanes on Elwert and Haide roads, Sunset Boulevard and Highway 99W
- Intersection and signal improvements at Highway 99W/Elwert Road
- Traffic signals at Elwert/Haide roads and Elwert/Edy roads
- Bike and pedestrian improvements
- Street lighting
- Sewer line and storm drainage

Construction is expected through July 2020 with additional road closures expected. This project is funded through the County's [Major Streets Transportation Improvement Program](#) (MSTIP) with contributions from the Sherwood School District and the city of Sherwood.

For more information, visit the [project webpage](#) or contact Capital Project Services at 503-846-7800 or lutproj@co.washington.or.us.



STAY CONNECTED



www.wc-roads.com