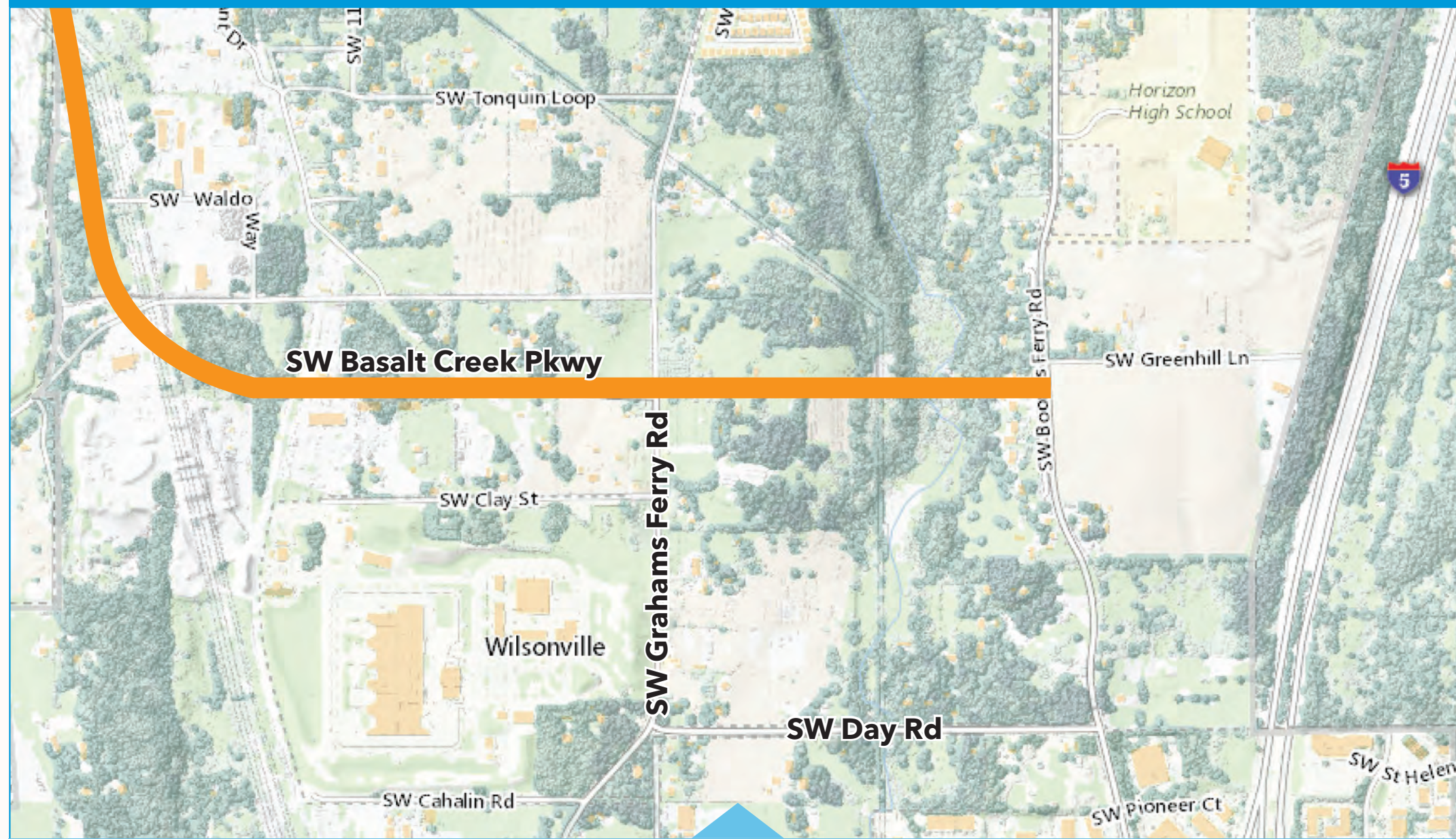


## Preferred Alignment

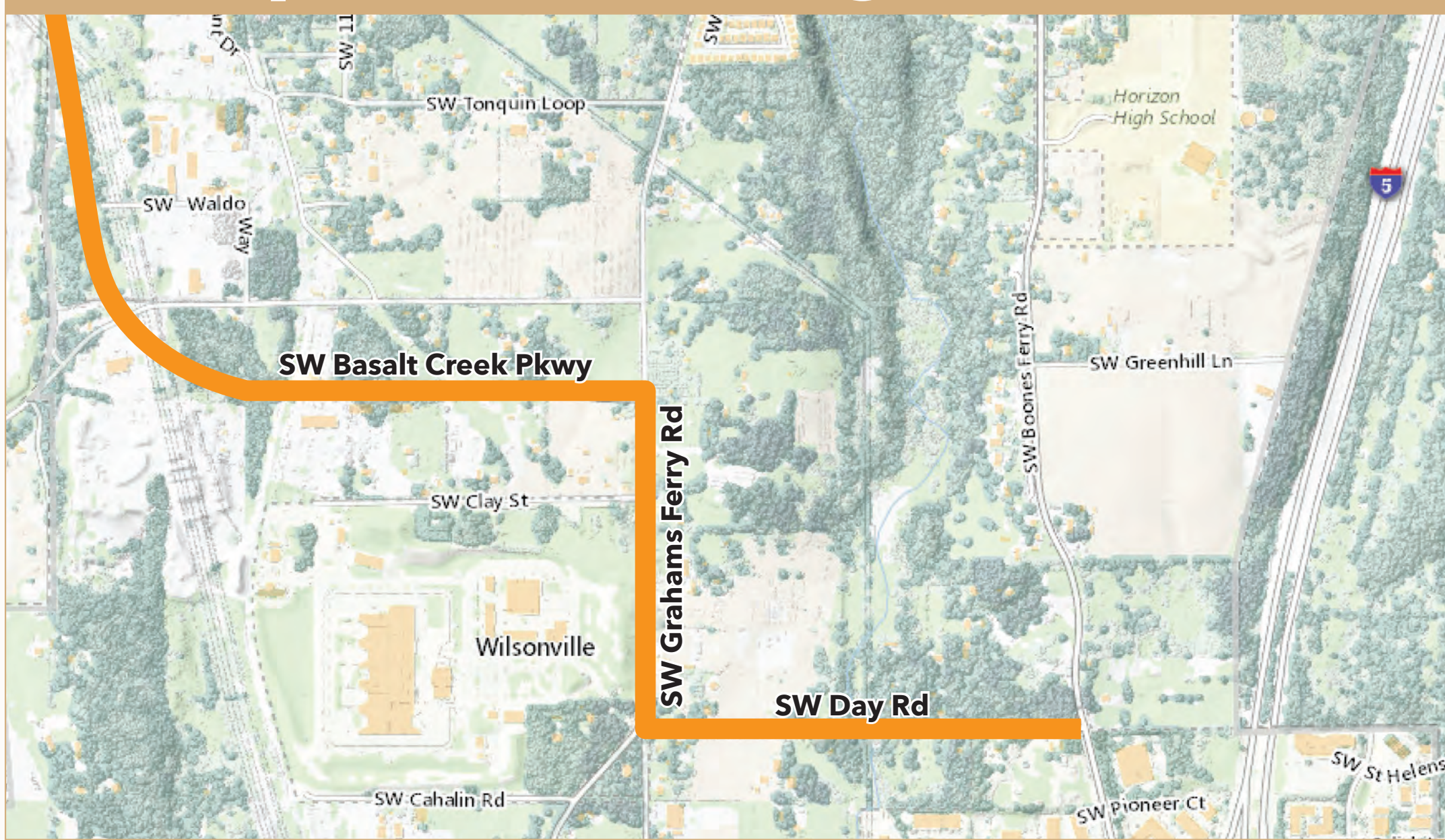
### ★ East-West Alignment



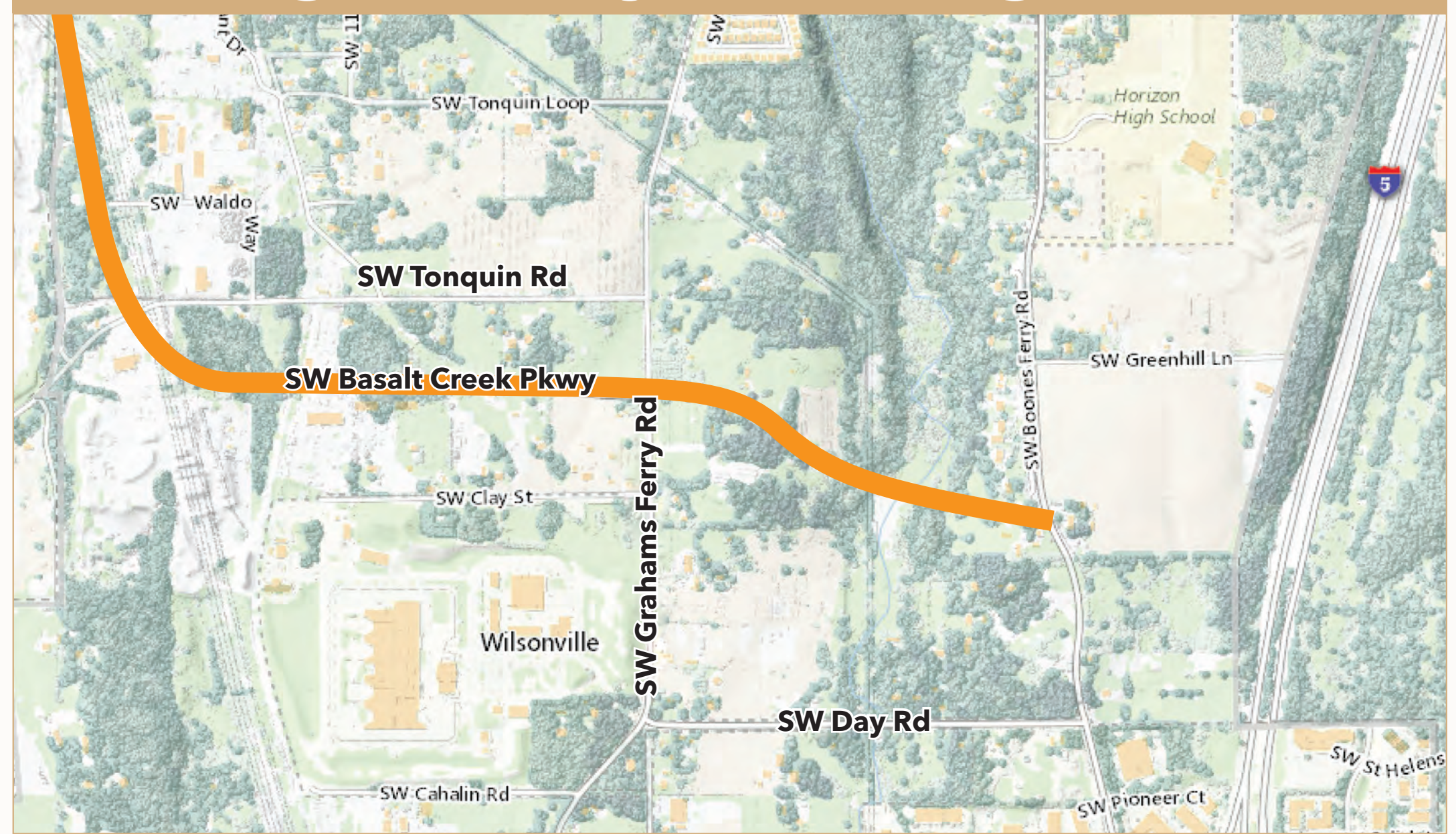
*Metro, ODOT, Washington County, and the cities of Wilsonville and Tualatin unanimously approved this alignment*

## Other Alignments Analyzed

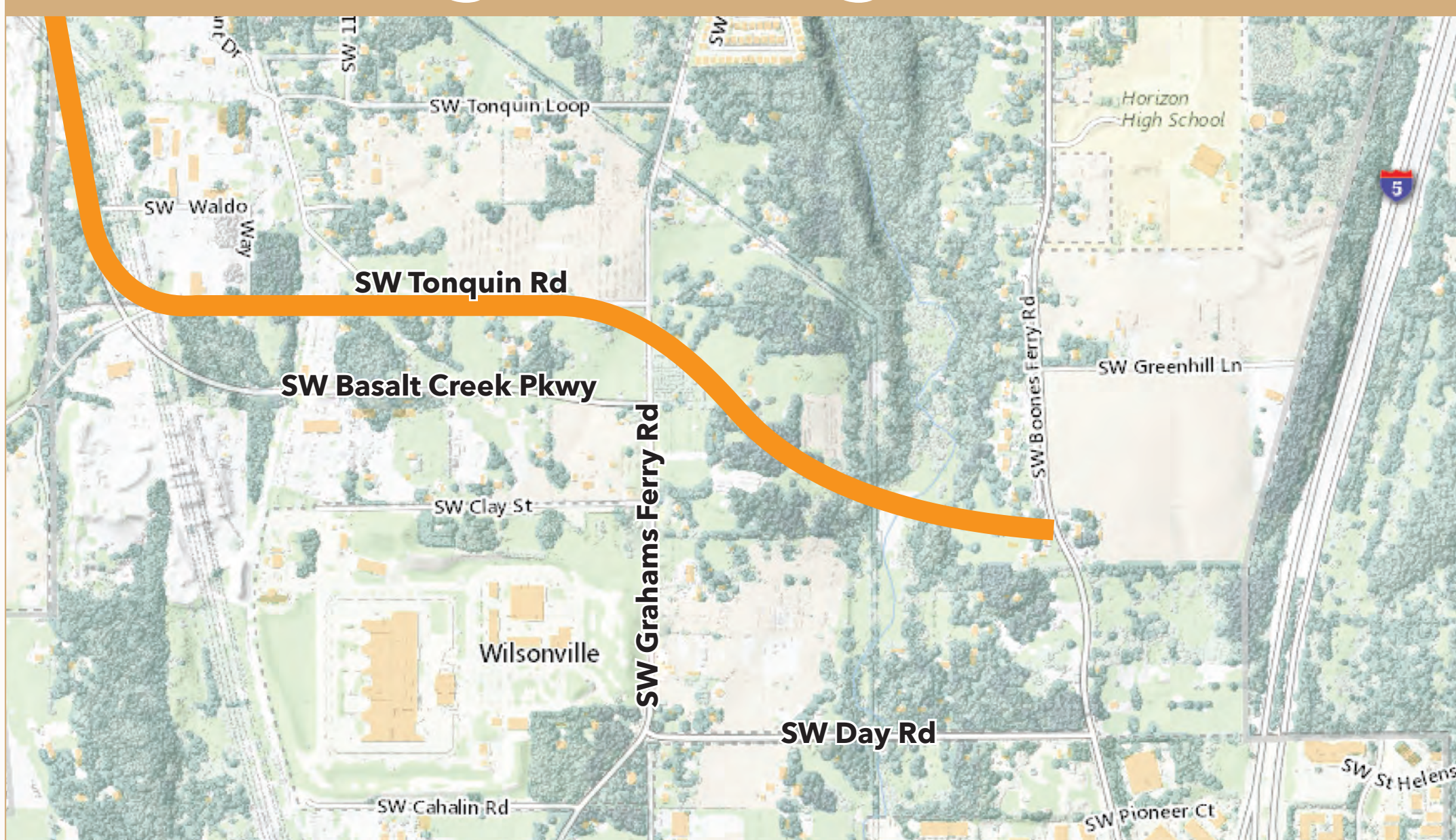
### Improve Existing Network



### Diagonal Hybrid Alignment



### Diagonal Alignment



### East-West Northern Alignment

