



Service Provider Notification

Tualatin-Sherwood Road Closure Notification

For immediate release Thursday, July 16, 2015

Tualatin-Sherwood Road will be closed to all traffic at the railroad crossing west of Oregon Street for up to 72 hours starting at 7 p.m. on **Friday evening, August 21**. The road will reopen as soon as work is completed. This closure is necessary to reconstruct the railroad crossing.

The road will be **closed to all road users** – motorists, pedestrians and bicyclists. Signs will identify detour routes. A map identifying the detour routes is attached.

This **schedule may change**. For current schedule information, check www.wc-roads.com.

Road closure location: Tualatin-Sherwood Road railroad crossing west of Oregon Street

Closure dates/times: Starting at **7 p.m. on August 21**, road closed for up to 72 hours

Traveler information: Closed to **all users** – motorists, pedestrians, bicyclists, emergency vehicles – use alternate route

Detour routes: See attached detour route map

Contact information: Victoria Saager, Public Information Officer
Desk: 503-846-7616; Cell: 503-969-2720
wc-roads@co.washington.or.us

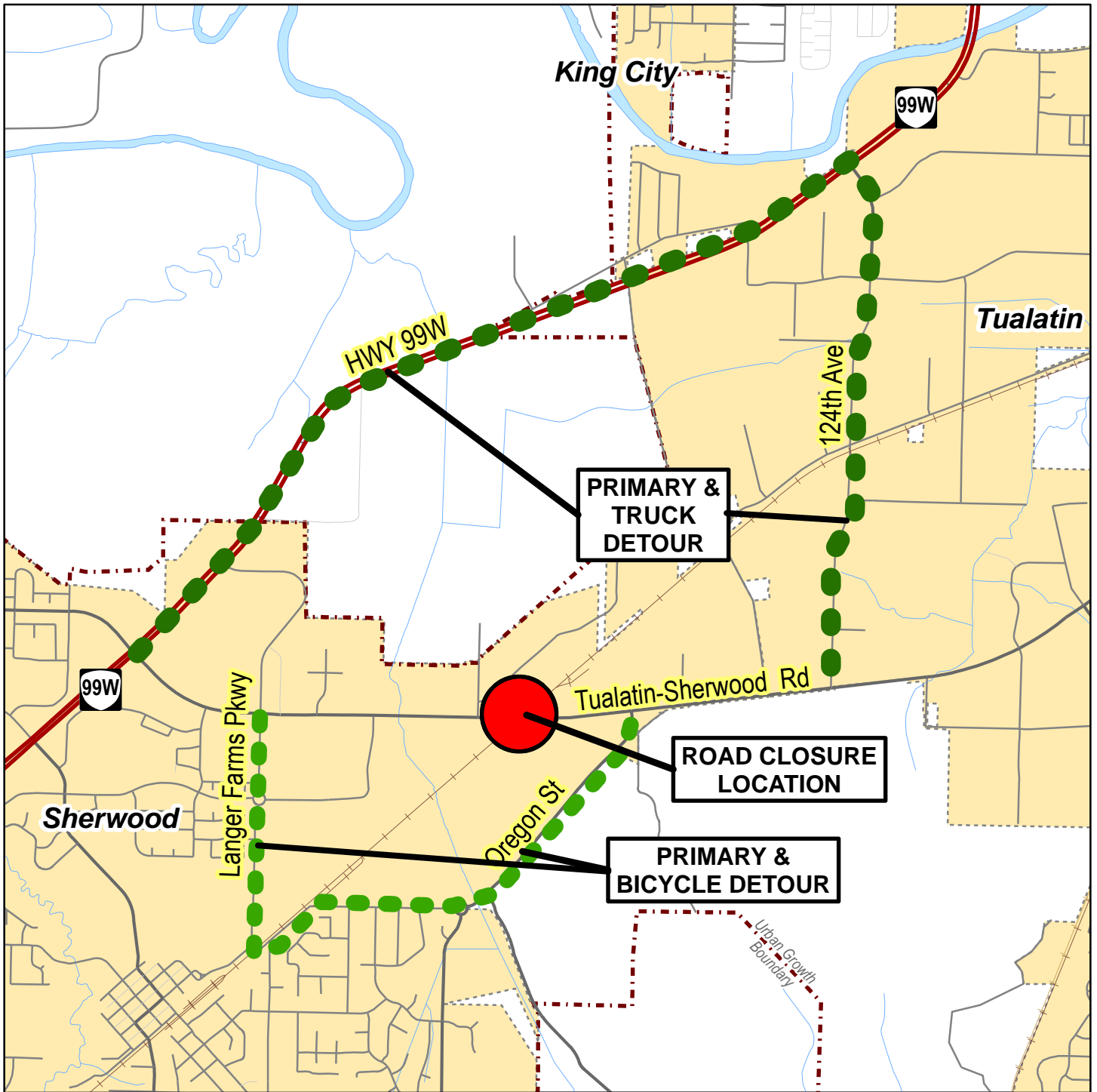
Ted Voelker, County Representative on-site
Cell: 503-969-2784

Aaron Clodfelter, County Project Engineer
Cell: 503-969-4533

Website: http://bit.ly/T-S_RR

**Department of Land Use & Transportation
Operations and Maintenance**

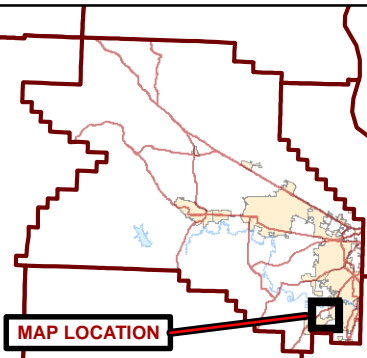
1400 SW Walnut Street, MS 51, Hillsboro, OR 97123-5625
phone: 503-846-7623 • fax: 503-846-7620
www.co.washington.or.us/lut • lutops@co.washington.or.us



WASHINGTON COUNTY
OREGON

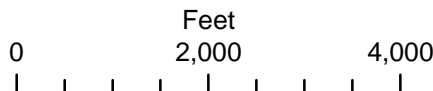
**TUALATIN-SHERWOOD ROAD
CLOSURE AT RAILROAD CROSSING**

For more information, contact:
Washington County
Traffic Engineering
Main: 503-846-7950
<http://co.washington.or.us>



MAP LOCATION

DISCLAIMER:
This product is for informational purposes and may not have been prepared for, or be suitable for legal, engineering or surveying purposes. Users of this information should review or consult the primary data and information sources to ascertain the usability of the information.



- Legend**
- Highways
 - Major Roads
 - Minor Roads
 - Private Roads
 - Railroads
 - Cities
 - County Boundary
 - Rivers / Lakes
 - Streams

Map Date: June 11, 2015
Prepared by: EDF